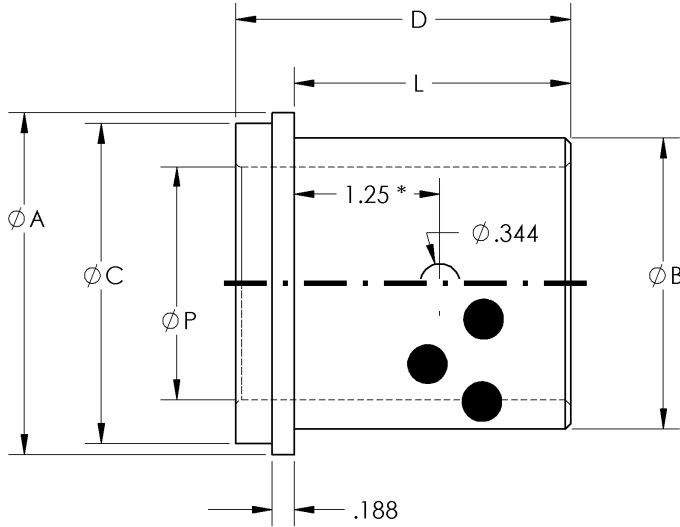


Supplied with D100 Toe Clamps



\* .75 for IDs < 2.5

**Materials:** Aluminum Bronze with/without Graphite Plugs

Catalog Number		P Nom Pin Dia	ID Tolerance	A	C	B	D +0/-0.03	H	L +0/-0.03	# Clamps
Grease Groove	Graphite									
GSC-750-SB	GSCB-750-S	3/4	+.0006 +.0010	1 5/16	1 1/8	1.125	1 9/16	1/2	1 1/16	2
GSC750-LB	GSCB-750-L									
GSC-875-SB	GSCB-875-S	7/8	+.0006 +.0010	1 9/16	1 3/8	1.375	1 9/16	1/2	1 1/16	2
GSC-875-LB	GSCB-875-L									
GSC-100-SB	GSCB-100-S	1	+.0006 +.0010	1 3/4	1 9/16	1.500	1 7/8	1/2	1 3/8	3
GSC-100-LB	GSCB-100-L									
GSC-125-SB	GSCB-125-S	1 1/4	+.0006 +.0010	2 1/8	1 15/16	1.750	2 3/8	1/2	1 7/8	3
GSC-125-LB	GSCB-125-L									
GSC-150-SB	GSCB-150-S	1 1/2	+.0006 +.0010	2 3/8	2 3/16	2.000	2 3/8	1/2	1 7/8	3
GSC-150-LB	GSCB-150-L									
GSC-175-SB	GSCB-175-S	1 3/4	+.0007 +.0012	2 5/8	2 7/16	2.250	2 7/8	1/2	2 3/8	3
GSC-175-LB	GSCB-175-L									
GSC-200-SB	GSCB-200-S	2	+.0007 +.0012	2 15/16	2 3/4	2.500	2 7/8	1/2	2 3/8	4
GSC-200-LB	GSCB-200-L									
GSC-250-SB	GSCB-250-S	2 1/2	+.0012 +.0018	3 3/8	3 3/16	3.000	3	3/8	2 5/8	4
GSC-250-MB	GSCB-250-M						4	3/8	3 5/8	
GSC-250-LB	GSCB-250-L						5	3/8	4 5/8	
	GSCB-300-X	3	+.0014 +.0023	3 7/8	3 11/16	3.500	3	3/8	2 5/8	6
GSC-300-SB	GSCB-300-S						4	3/8	3 5/8	
GSC-300-MB	GSCB-300-M						5	3/8	4 5/8	
GSC-300-LB	GSCB-300-L						6	3/8	5 5/8	

Supplied with O.D. ground to +0/-0.0005; omit "G" prefix in catalog number to specify leaving +.015 grind stock.